



PREMIER

MANUFACTURING CO.

NEW PRODUCTS

Premier Manufacturing's new 1400 and 1400H couplings replace the 100-4 and 100-4H couplings that were used for heavy-duty applications for many years. These new hitches are easy to operate with strike-resistant latching and a popular mounting pattern making them the ideal hitch for many industries and applications. Using the latest in technology, engineers effectively moved material where it is needed most resulting in a reduction in weight and an increase in strength. With updated material specifications, the new 1400 and 1400H have a 40% increase in surface hardness creating a significant reduction in wear. Additionally, the latch capacity has increased from 20,000 pounds to 60,000 pounds.



Model 1400 Part # 10005672

Maximum Gross Trailer Weight: 110,000 lbs (49,895 kg)
Maximum Tongue Weight: 20,000 lbs (9,072 kg)
Ultimate Latch Capacity: 60,000 lbs (27,216 kg)



SILVER SERIES



Model 1400H Part # 10005676

Maximum Gross Trailer Weight: 110,000 lbs (49,895 kg)
Maximum Tongue Weight: 20,000 lbs (9,072 kg)
Ultimate Latch Capacity: 60,000 lbs (27,216 kg)

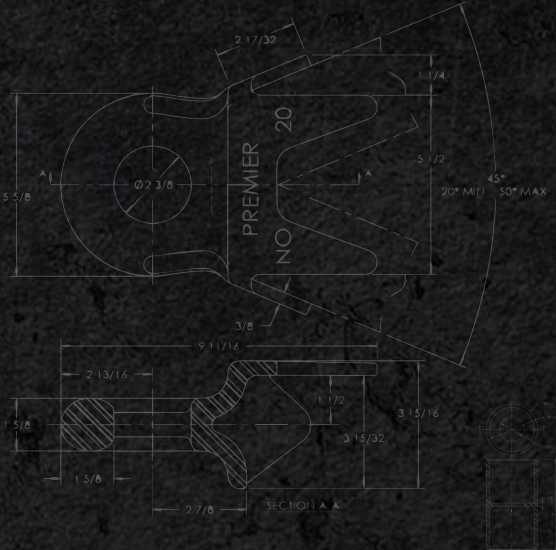
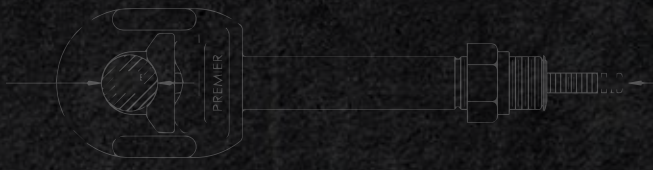
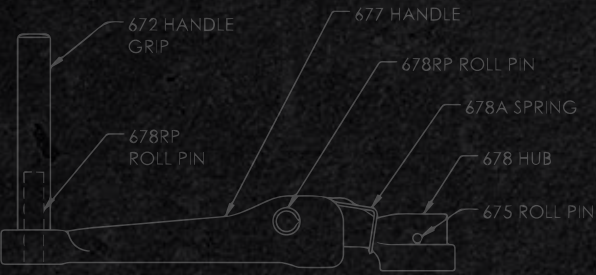
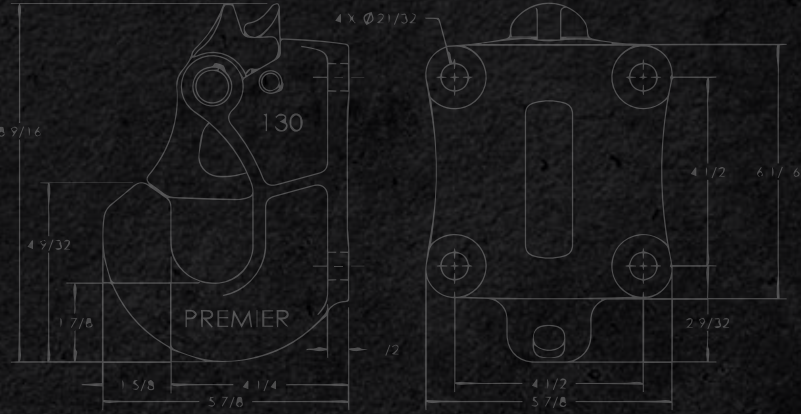
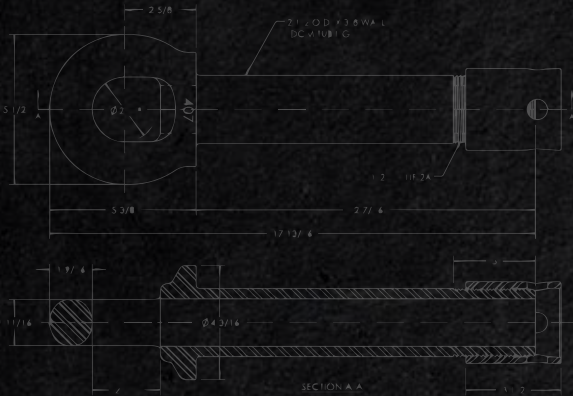


SILVER SERIES

ITEM # 10006085



WE'RE PULLING FOR YOUR SUCCESS



A DIVISION OF HIGH BAR BRANDS, LLC



HIGH BAR BRANDS



PREMIER MANUFACTURING

19500 SW Teton Avenue • Tualatin, OR 97062

(800) 255-5387 or (503) 234-9202

www.PREMIER-MFG.com

