



# **PREMIER**

## **MANUFACTURING CO.**

### **SUB BRANDS**



**SAF-TITE**



**PREMALLOY**



**EXTENDED LIFE**



**SAF-T-LATCH**



**PREMIER**  
MANUFACTURING CO.

# WE'RE PULLING FOR YOUR SUCCESS

Unsurpassed strength  
at an incredible value



**SAF-TITE**  
Raising the Bar with  
Strength & Value



Work hardening material  
perfect for off-road and  
aggregate applications



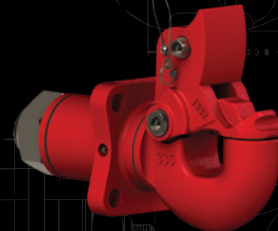
**PREMALLOY**  
The Harder You Work It,  
The Harder It Gets



Direct injection of lubrication at  
latch pivot points creates smooth  
consistent latch performance



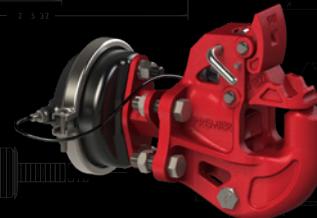
**EXTENDED LIFE**  
Your Ally Against Corrosion



Closes with the release of the air  
brakes, acting as a fail-safe when  
the latch is inadvertently left open



**SAF-T-LATCH**  
Lock In Safety  
And Security



A DIVISION OF **HIGH BAR BRANDS, LLC**



**HIGH BAR  
BRANDS**



**PREMIER  
MANUFACTURING CO.**

**PREMIER MANUFACTURING**  
19500 SW Teton Avenue • Tualatin, OR 97062  
(800) 255-5387 or (503) 234-9202  
[www.PREMIER-MFG.com](http://www.PREMIER-MFG.com)

Sales Flyer #106058