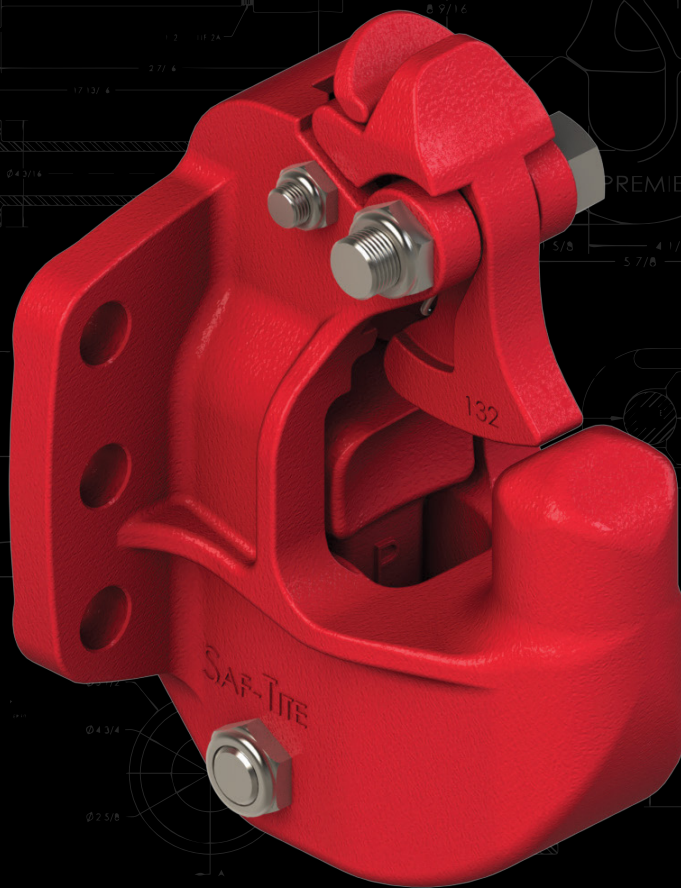




# SAF-TITE



**PREMIER**  
MANUFACTURING CO.



**UNSURPASSED  
STRENGTH**

---

**INCREDIBLE  
VALUE**

**PREMIER-MFG.COM | 800.255.5387 | PULLING FOR YOUR SUCCESS**





**PREMIER**  
MANUFACTURING CO.

# WE'RE PULLING



## SAF-TITE

Unsurpassed strength at  
an incredible value

Proprietary Saf-Tite technology  
allows for maximum strength material  
with easy-to-operate components.



The following coupling/hitch models  
offer our Saf-Tite technology:

- 100
- 100-3
- 100-4
- 100-4H

LEARN MORE AT [PREMIER-MFG.COM](http://PREMIER-MFG.COM)



# FOR YOUR SUCCESS

## UNSURPASSED STRENGTH

Saf-Tite couplings / pintle hitches are unsurpassed in Maximum Gross Trailer Weight capacities with easy-to-operate latch systems that utilize rust-free polymer pivot points.

## VALUE

There is no better value on the market today. Premier Saf-Tite couplings offer a savings when compared to other couplings on the market.

## COMPOSITION

Saf-Tite material is simply stronger. Compare the capacities with competing models to understand the strength benefits.

TOP OF THE LINE COUPLING COMPONENTS SINCE 1924

Sales Flyer #106060

A DIVISION OF **HIGH BAR BRANDS, LLC**



**HIGH BAR  
BRANDS**



**PREMIER MANUFACTURING**

19500 SW Teton Avenue • Tualatin, OR 97062

(800) 255-5387 or (503) 234-9202

[www.PREMIER-MFG.com](http://www.PREMIER-MFG.com)